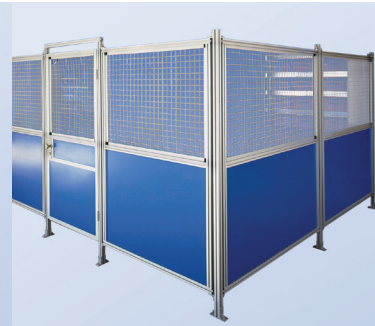
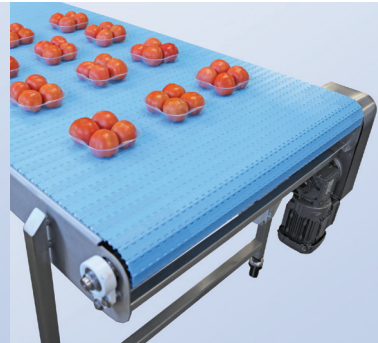
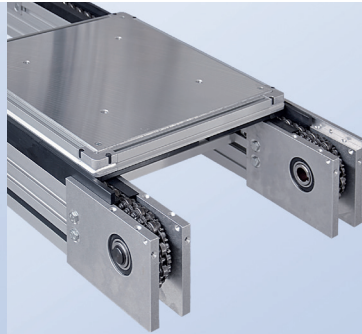
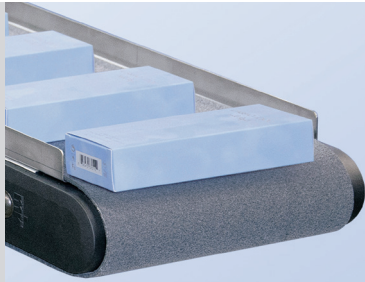




mk North America, Inc.
an mk Technology Group Company



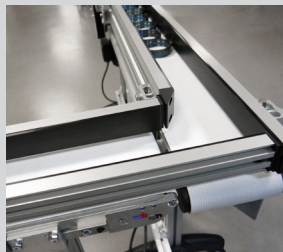
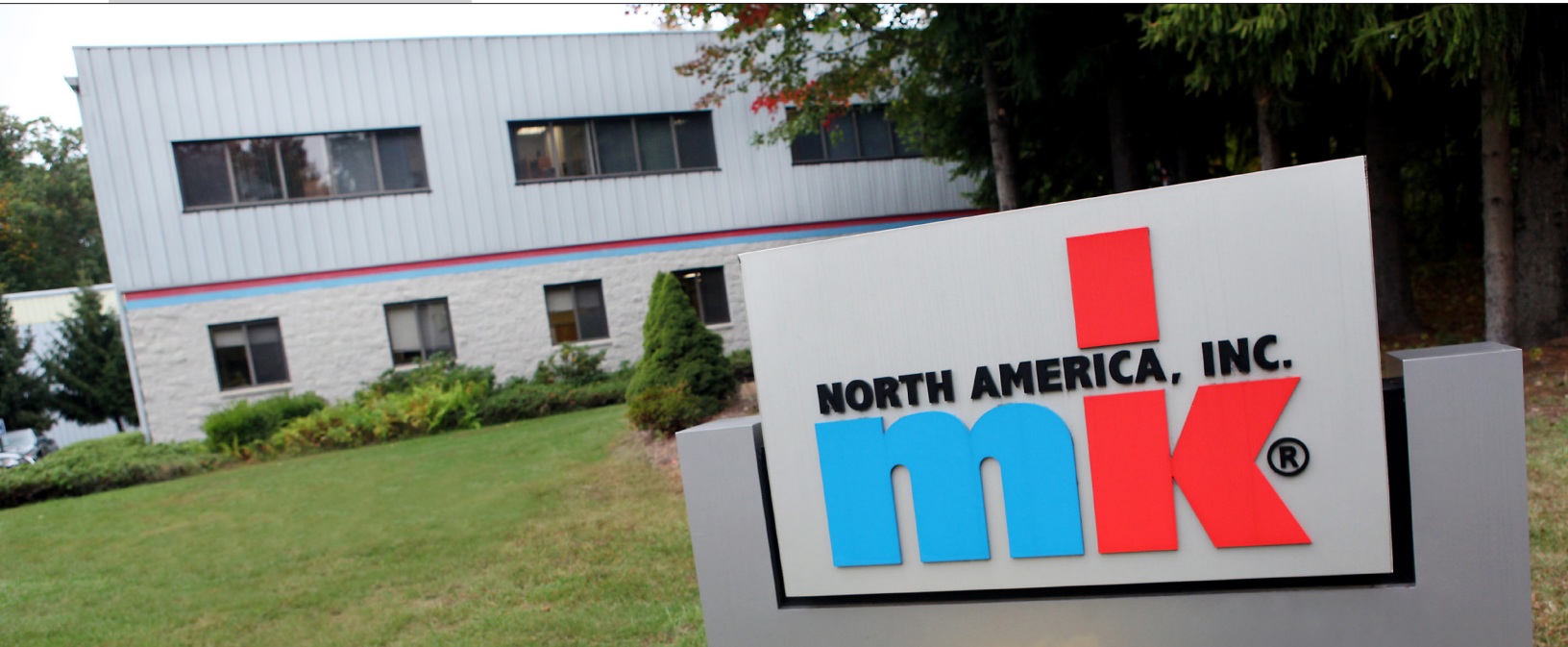
Product Overview

Aluminum Conveyors
Pallet Conveyor Systems
Stainless Steel Conveyors
Aluminum Framing

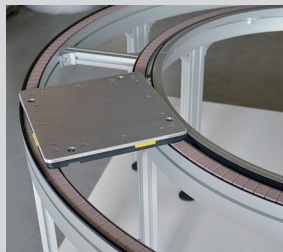
mk North America, Inc.
better products. better solutions.

better products. better solutions.

mk North America



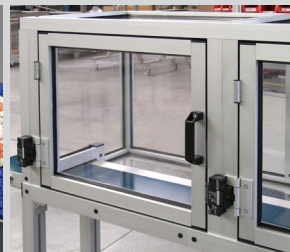
Aluminum Conveyors



Pallet Conveyor Systems



Stainless Steel Conveyors



Aluminum Framing

mk North America is a member of the mk Technology Group and a leading worldwide manufacturer of aluminum conveyors, workpiece pallet conveyors, stainless steel conveyors, and extruded aluminum framing.

Unsurpassed variety, maximum flexibility, superb quality and easy integration are reasons mk has become the supplier of choice for machine builders, system integrators and manufacturing companies around the globe.

With over 25 years of diverse industrial know-how, superb quality, constant innovation and application engineering excellence, mk North America, Inc. offers you a perfect solution for any application.

Aluminum Conveyors

With over 20 different customizable conveying systems, mk offers a product variety which is unsurpassed in the marketplace.



Pallet Conveyor Systems

VersaMove workpiece pallet conveyor systems offer endless possibilities for manual and automated assembly and testing operations.



Stainless Steel Conveyors

CleanMove sanitary stainless steel conveyors provide state-of-the-art cleanability, performance, reliability and are designed to industry standards.

Aluminum Framing

Aluminum Framing offers fast assembly, easy reconfiguration and unlimited flexibility with maximum rigidity and a precise fit.

Engineered Solutions

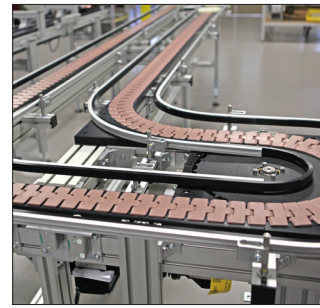
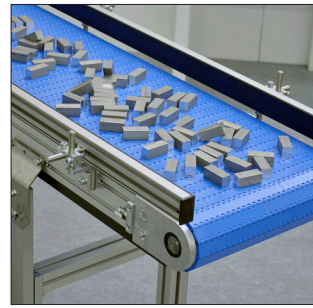
In partnership with our customers, mk excels at offering not only a better product, but a better solution. Whether this means utilizing a product from our standard offering or developing an innovative, custom engineered solution for your particular application.

Services & Support

- Application & Engineering Support
- Approval Drawings
- Field Support
- Integration & Controls
- FAT & SAT
- Start-up Assistance
- Maintenance & Spare Parts
- Made in USA
- 10 Year Warranty

World Class Conveyor Solutions

Aluminum Conveyors



QuickDesigner
Conveyor Configurator



Free online flat belt
conveyor design,
CAD, & pricing tool.

With 20 different conveying systems, mk offers a product variety which is unsurpassed in the marketplace. Our broad offering along with more than 25 years of experience in material handling ensures a robust solution. Our conveyors have a long life and reliable operation; while maintaining all the advantages of a modular design and expandability.

Constructed of mk structural, t-slotted, and aluminum extrusions; all mk conveyors are highly configurable and feature a wide selection of drives, transfers, stands, guide rails and accessory options.

- Robust construction and high quality components reduce operating expenses and increase productivity
- Modular design and construction reduces engineering and lead times
- Designed for maximum flexibility and easy integration

Offering

Flat Belt	Roller Chain
Cleated Belt	Accumulating
Plastic Modular Belt	Roller Chain
Timing Belt	Attachment Chain
Attachment Timing Belt	Gravity Roller
Flat Top Chain	Driven Roller

Configurations

Horizontal
Curve
Incline
Z-Frame
Serpentine
Multi-lane

Engineered Solutions

From modified standard conveyors to complete custom designs, our innovative solutions increase your line's performance and achieve better results. We offer special engineered solutions for:

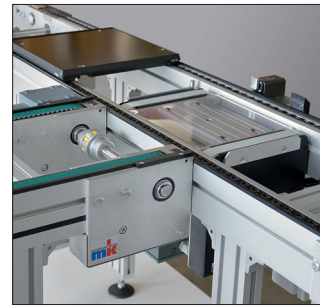
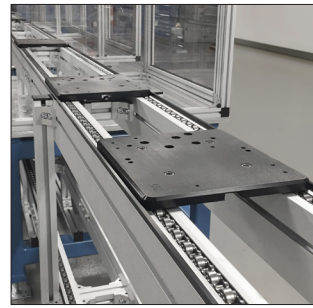
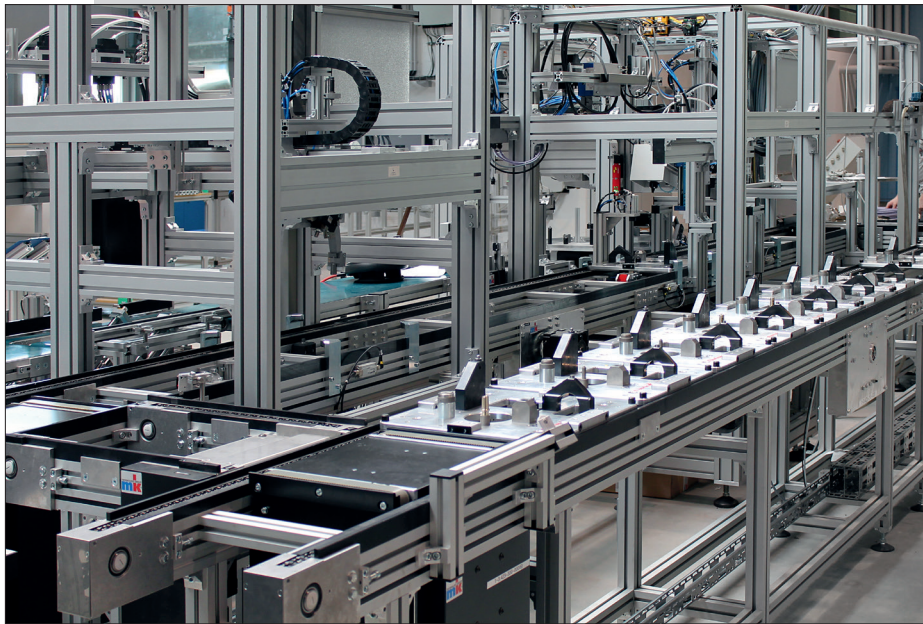
- Buffering & Storage
- Parts Orientation & Positioning
- Diverting, Merging & Sorting
- Indexing
- Vision & Inspection
- Line Access
- Specialty Belting
- Extreme Duty Applications



View our
Conveyor
Catalog.

Conveyor Solutions for Assembly Automation

Pallet Conveyor Systems



VersaMove is a non-synchronous workpiece pallet based conveyor system designed to improve manufacturing productivity and product quality while allowing for maximum process flexibility.

VersaMove conveyors are offered in three platforms: VersaMove Standard, VersaMove Plus and VersaMove Ultra to suit a wide range of applications. Each platform offers a complete series of pallet-based transfers, positioning and control modules to satisfy the varied requirements of manual or automated assembly and testing operations.

- Pallet sizes up to 1,200 x 1,200 mm
- Loads up to 1,000 lbs. per pallet
- Positioning repeatability +/- 0.1 mm

System Modules

Transport Conveyors	Lift & Rotate Units
Workpiece Pallets	Vertical Transfer Units
Lift & Transfer Units	Pallet Stops
Lift & Locate Units	

Offering

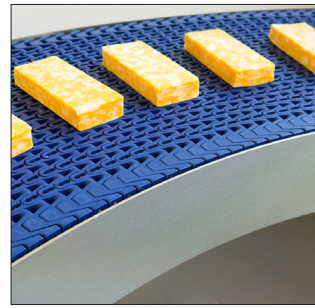
Accumulating Roller Chain
Timing Belt
Side-Flexing Chain



View our
VersaMove
Brochure.

Move Cleaner, Smarter, Faster, Safer

Stainless Steel Conveyors



**clean
move**
stainless steel conveyors



CleanMove is a full line of sanitary stainless steel conveyors designed for the specific needs of the food and pharmaceutical industries. CleanMove conveyors provide state-of-the-art cleanability, performance, reliability and are designed to meet industry standards.

CleanMove Conveyors are offered in three sanitary construction levels: CleanMove Standard, CleanMove Plus and CleanMove Ultra. This allows you to meet your industry and application specific government compliance standards while minimizing equipment cost.

- High quality components and materials
- Designed to FDA, 3-A, NSF, and BISSC regulations
- Large variety of options and accessories

Offering

Flat Belt	Positive Drive
Cleated Belt	Gravity Roller
Plastic Modular Belt	Driven Roller
Flat Top Chain	

Configurations

Horizontal
Curve
Incline
Z-Frame
Serpentine
Multi-lane



View our
CleanMove
Brochure.

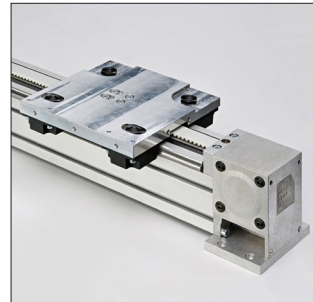
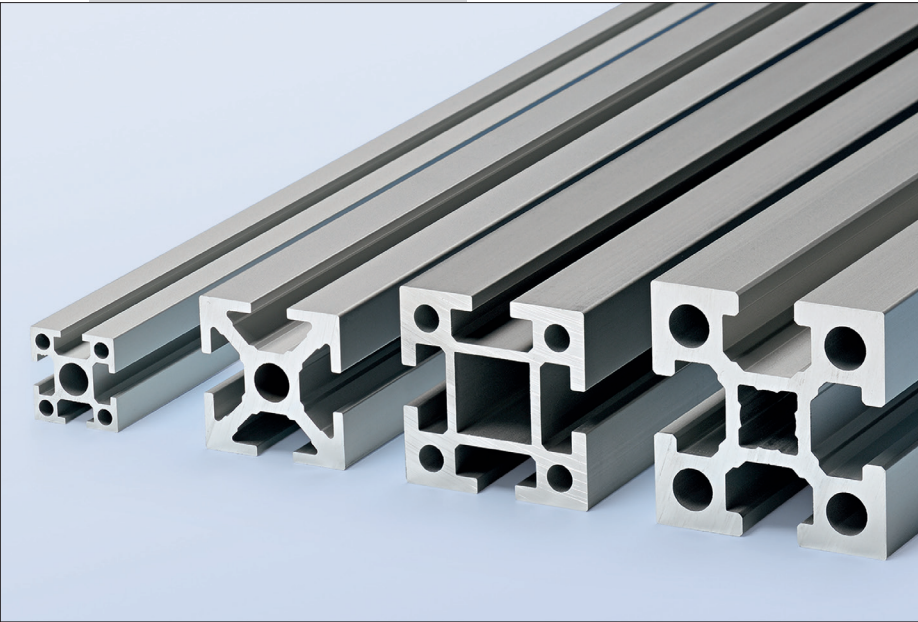
Engineered Solutions

mk knows that food and pharmaceutical companies have a variety of regulations and needs to meet. At mk we will work with you to meet your specific requirements. We offer special engineered solutions for:

- Accumulation, Buffering & Storage
- Belt Curves
- Diverting, Merging & Sorting
- Elevating
- Processing & Rejecting
- Packaging & Preparation
- Indexing, Positioning & Orientating
- Specialty Belting & Conveyor Styles

Flexibility Through Modularity

Aluminum Framing



Fast Ship Program Available

With mk Aluminum Framing you can build just about anything you can imagine. Whether it be machine bases, safety enclosures, perimeter guards, tool racks, robot stands, carts, workstations, linear modules, display units or custom constructions.

Extruded Aluminum Framing

Over 200 Different Profile Shapes
Countless Connection Methods
Bulk, Kit, Turn-key Assembly

Guarding

Machine & Perimeter Guarding
Safety Enclosures
Wide Variety of Paneling Options

Factory Equipment

Standard & Custom Workstations
Kanban & Storage Racks
Material Shuttles & Storage Carts

Linear Motion

Timing Belt Driven Actuators
Linear Positioning Modules



View our
Profile
Catalog.



mk North America, Inc.
an mk Technology Group Company
105-125 Highland Park Drive
Bloomfield, CT 06002, USA
Phone: 860.769.5500
Fax: 860.769.5505
www.mknorthamerica.com
sales@mknorthamerica.com

CleanMove and VersaMove are registered trademarks of mk North America, Inc. All rights reserved, information subject to change without notice. © 2016 mk North America, Inc.

REV. 2016.01